

GENERAL NOTES

Reinforcing steel cover shall be 2 1/2" in top and 1" minimum in bottom of floor slab, 3" in footings, except bottom steel which shall be 4", and 2" in all other parts, unless noted.

Limits of all asphalt to be determined on site.

The present structure shall be removed in its entirety to facilitate placing new structure.

All exposed concrete edges shall be chamfered 1".

Spread footings to be lowered and embedded into the sound rock in accordance with the Geotechnical Report and investigation prepared by Earth Exploration (EEI Project No. I-17-341)

Foundation excavation shall be in accordance with Geotechnical Report and investigation prepared by Earth Exploration (EEI Project No. I-17-341).

Elevations based on Primco benchmark, Pin In Telephone West of South Approach. (El. 100.00)

DESIGN DATA

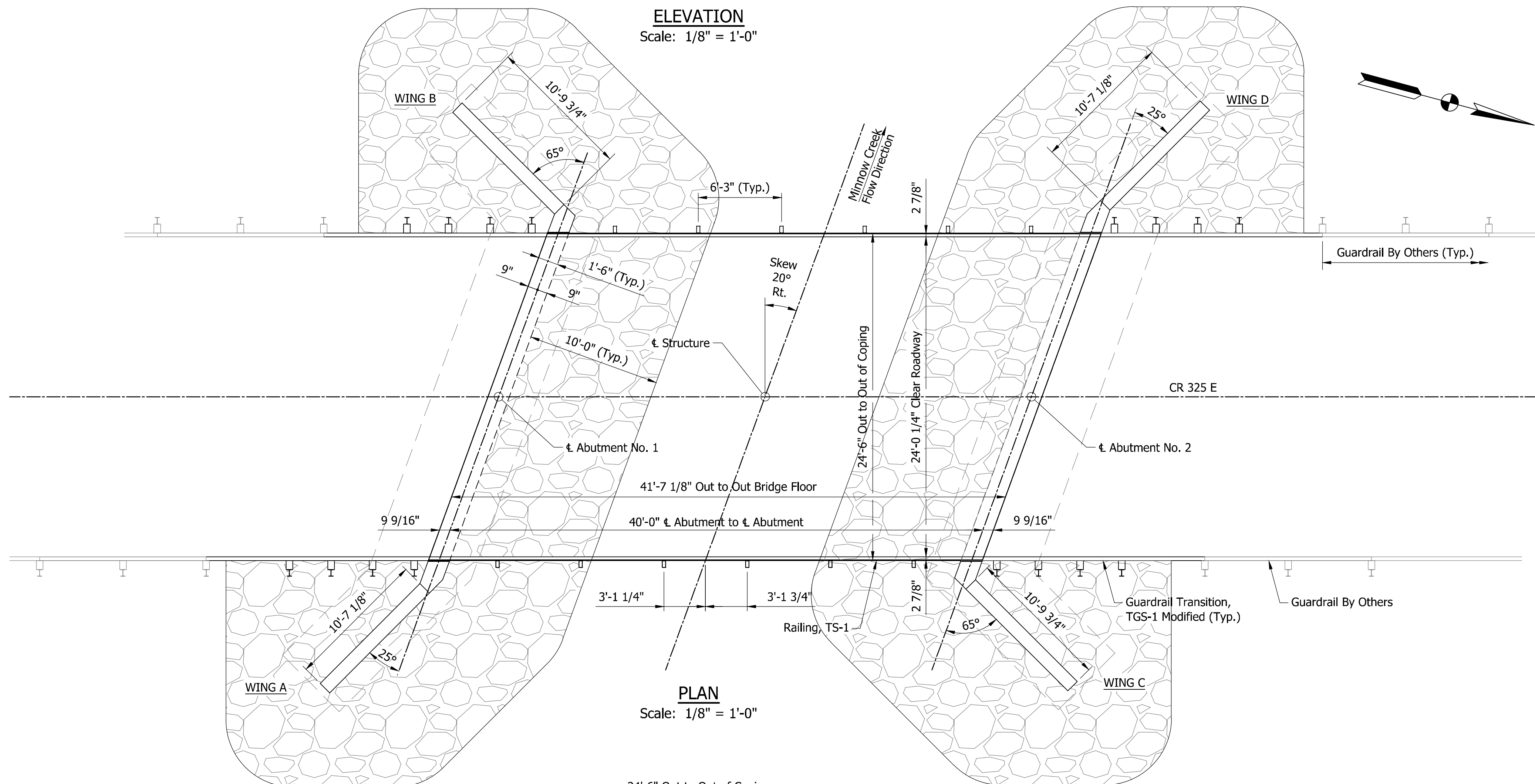
LIVE LOAD
Designed for HL-93 loading, in accordance with AASHTO LRFD Bridge Design Specifications, 8th Edition, 2017.

DEAD LOAD
Actual weight plus 35 psf for future wearing surface and 15 psf for permanent metal deck forms.

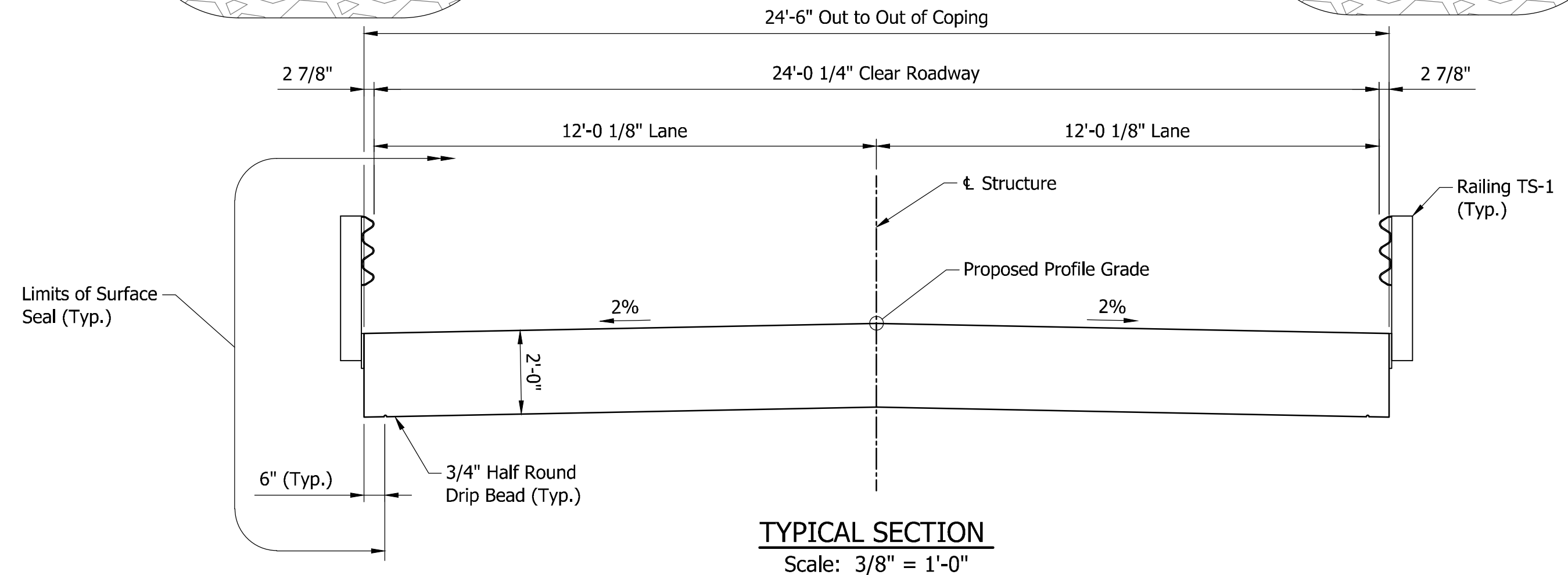
DESIGN STRENGTH

CONCRETE	
Class C	f _c = 4,000 psi
Class B	f _c = 3,000 psi
Class A	f _c = 3,500 psi

REINFORCING STEEL	
Grade 60	f _y = 60,000 psi



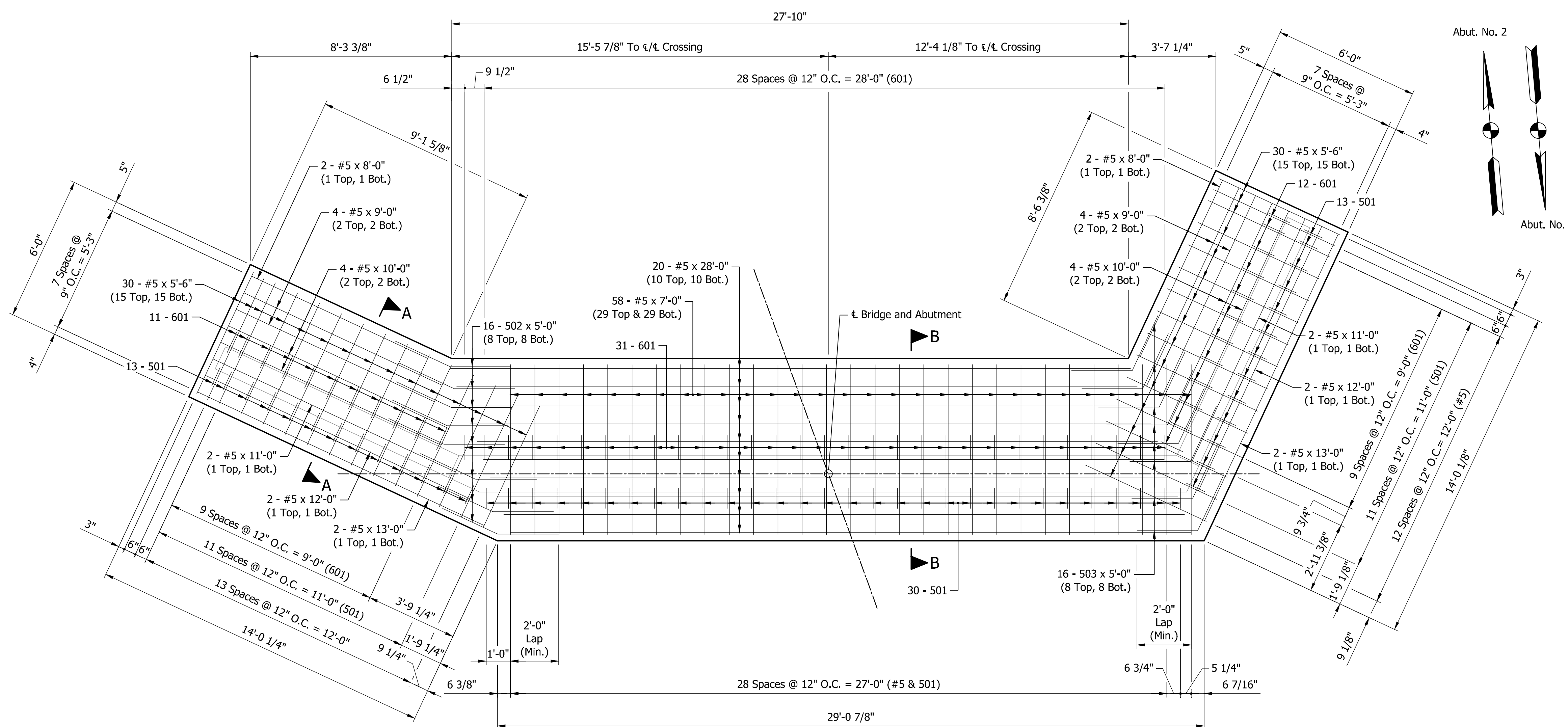
PLAN
Scale: 1/8" = 1'-0"



TYPICAL SECTION
Scale: 3/8" = 1'-0"

REINFORCED CONCRETE SLAB BRIDGE
1 SPAN: 40'-0"
24'-0 1/4" CLEAR ROADWAY WIDTH, 20° SKEW RT.

 Ph: (260) 490-1025 www.eri.consulting 11020 Diebold Rd. Fort Wayne, Indiana 46845		RECOMMENDED FOR APPROVAL DESIGN ENGINEER DATE: 10/23/2020	GENERAL PLAN	SCALE AS NOTED
				SHEETS 1 of 5 PROJECT



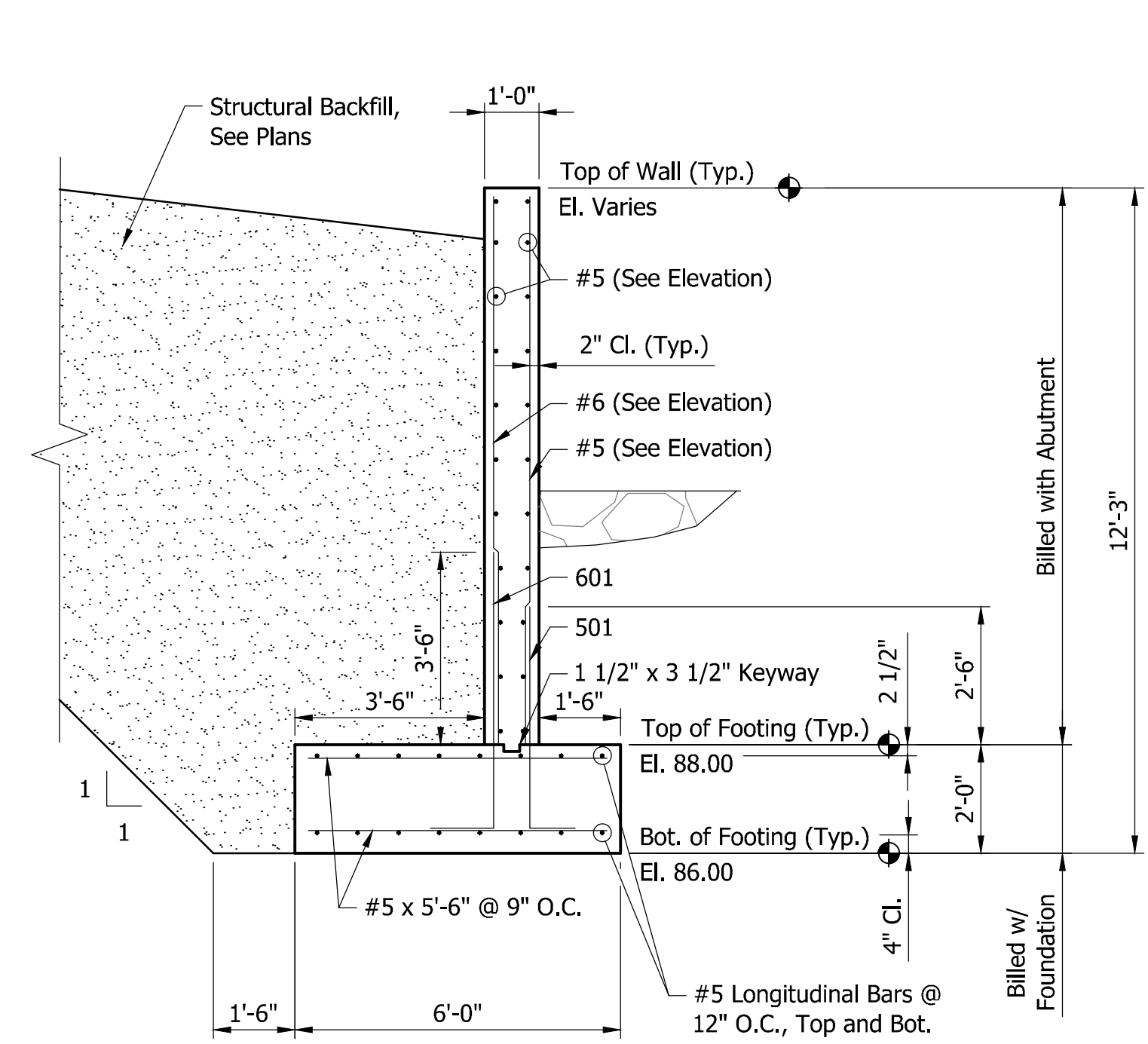
BILL OF MATERIALS
BOTH FOUNDATIONS

MARK OR SIZE	NO. REQ'D	LENGTH	WEIGHT
601	106	6'-1"	
Total #6 Reinf. Bars			969#
501	112	4'-11"	
502	32	5'-0"	
503	32	5'-0"	
#5	40	28'-11"	
#5	8	13'-0"	
#5	8	12'-0"	
#5	8	11'-0"	
#5	16	10'-0"	
#5	16	9'-0"	
#5	8	8'-0"	
#5	116	7'-0"	
#5	120	5'-6"	
Total #5 Reinf. Bars			4,296#
Total Reinf. Bars			5,265#

CONCRETE

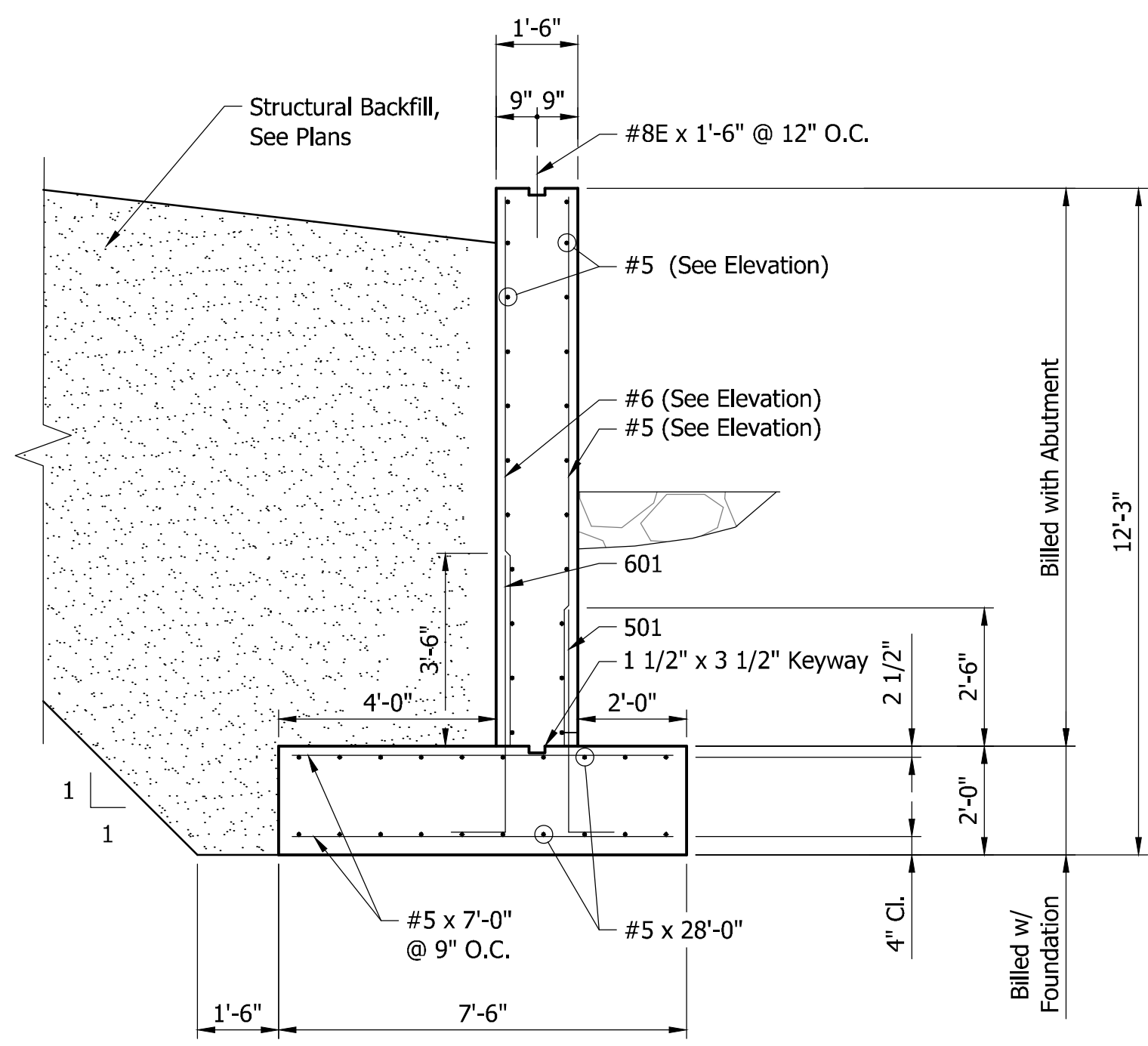
Concrete, Class A	52.0 CYS
-------------------	----------

PLAN
Scale: 3/8" = 1'-0"

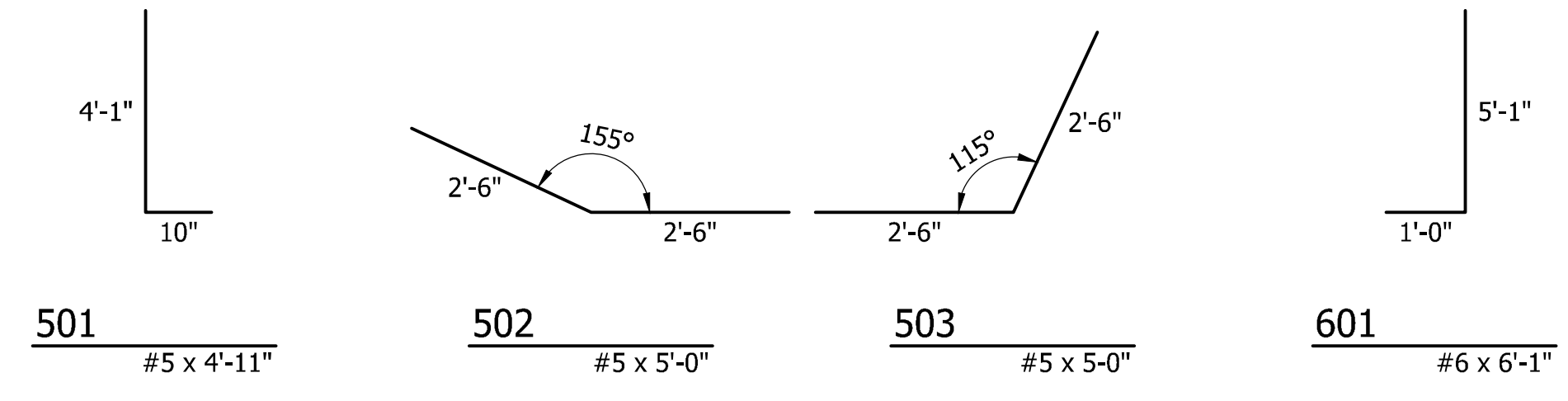


SECTION A-A
Scale: 3/8" = 1'-0"

Note: Foundation to Bear on Sound Rock. Excavation Req'd Below El. 86.00 Shall Be Filled with Lean Concrete as Req'd.



SECTION B-B
Scale: 3/8" = 1'-0"



BAR BENDING DETAILS
Not to Scale

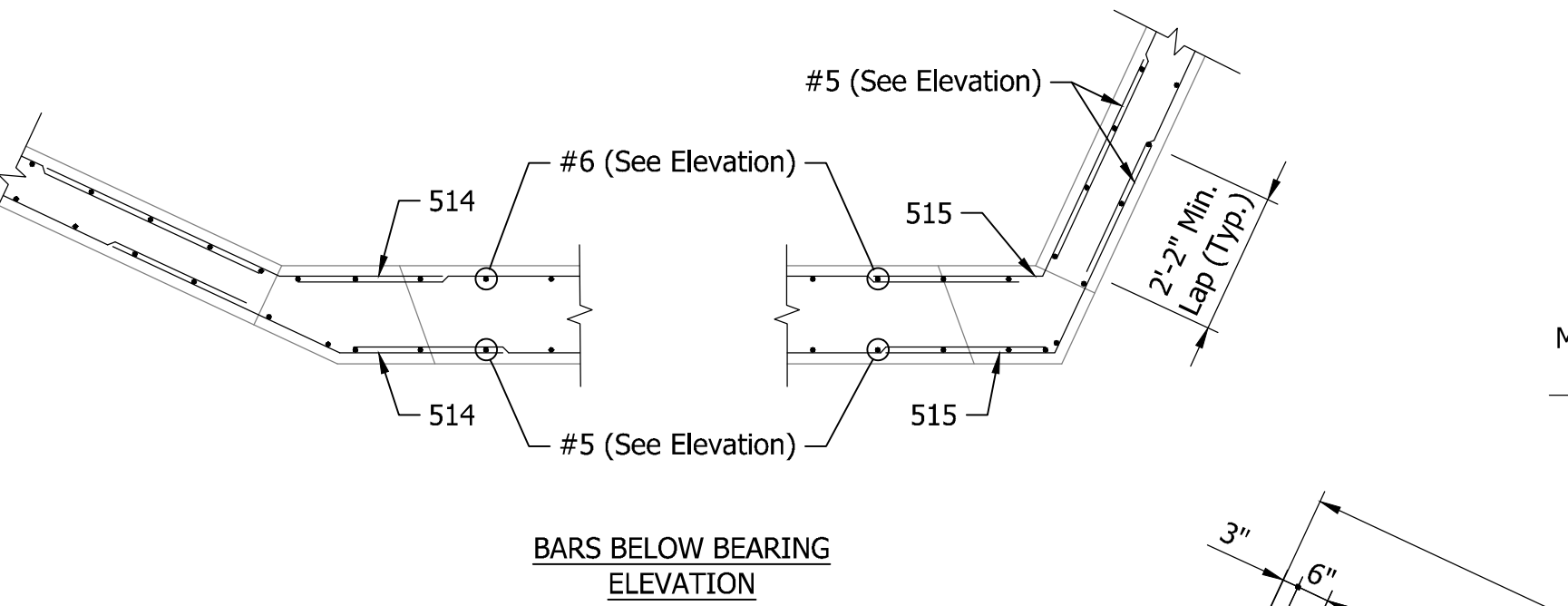
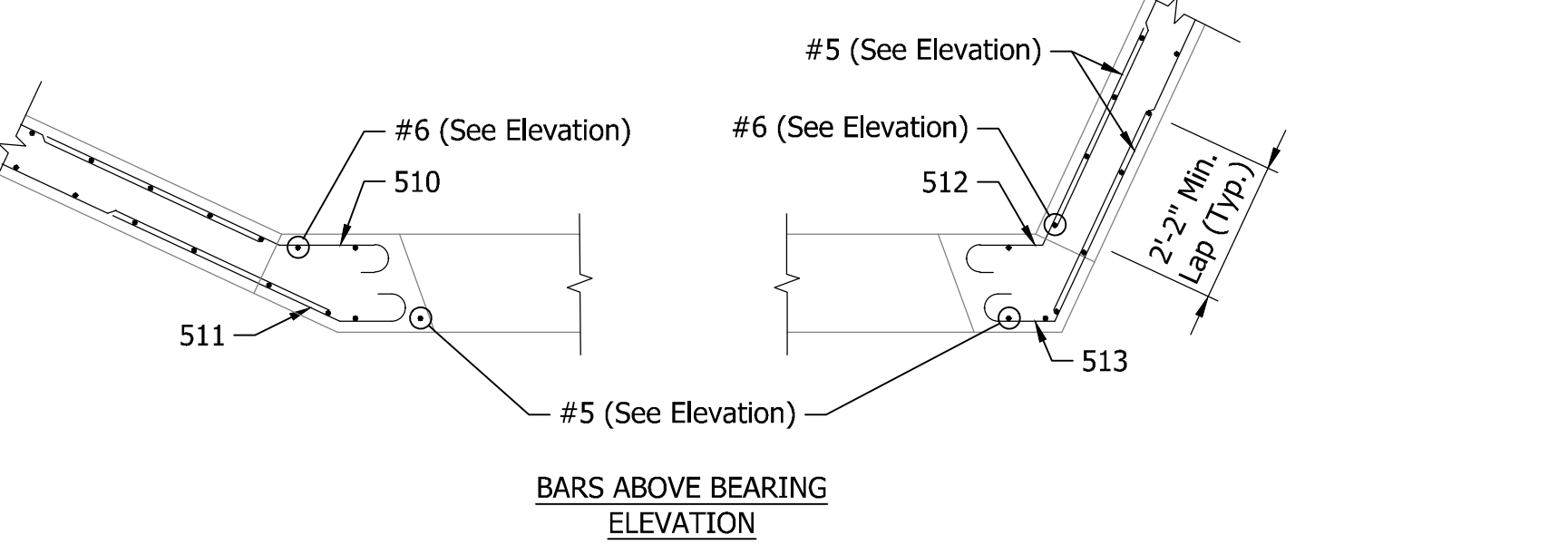
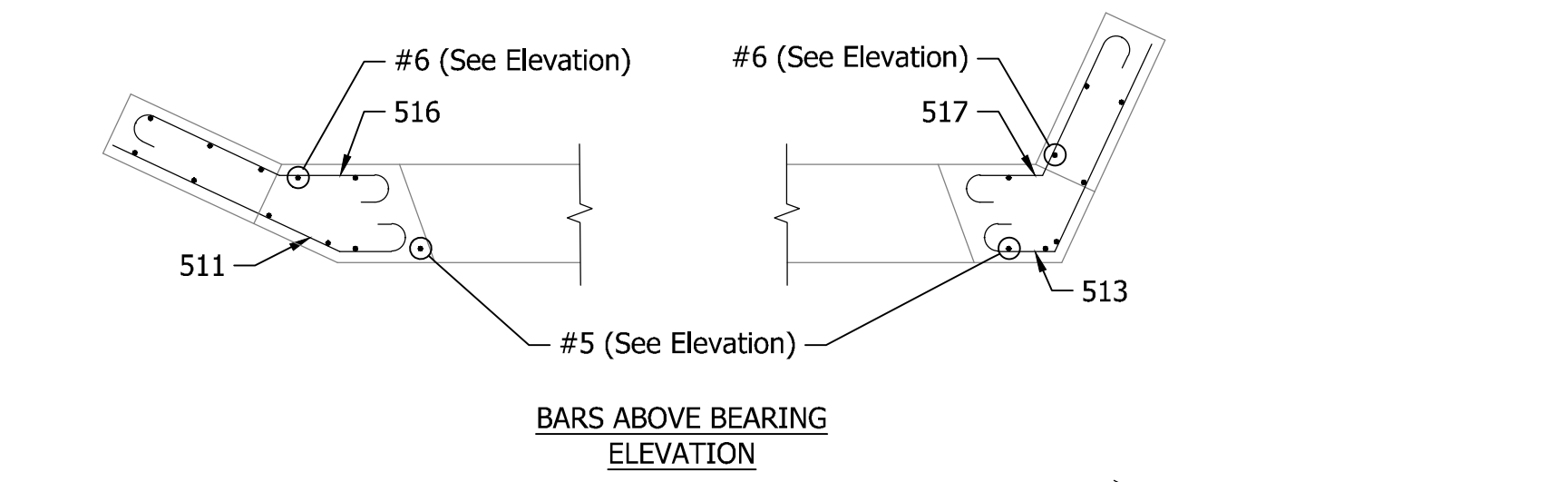
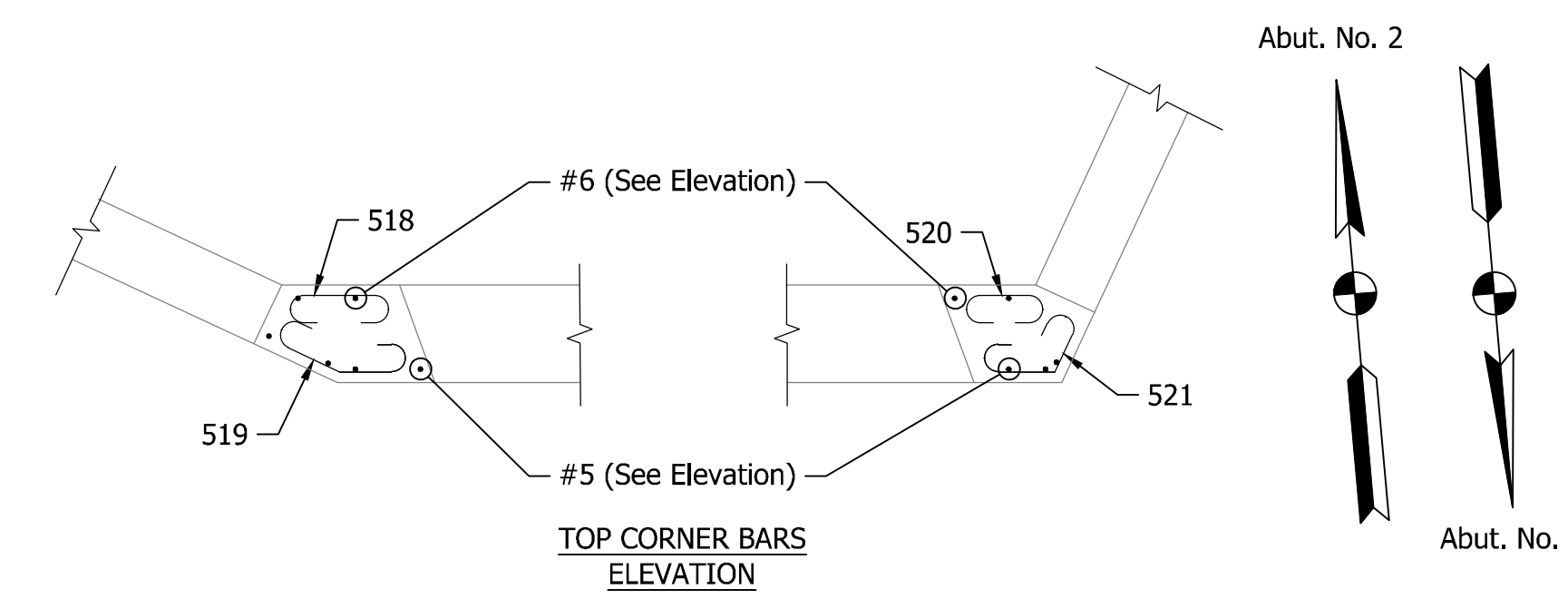
ENGINEERING RESOURCES, INC.
Ph: (260) 490-1025
www.eri.consulting
11020 Diebold Rd.
Fort Wayne, Indiana 46845

KURT J. HEIDENRECH
REGISTERED PROFESSIONAL ENGINEER
No. 300129
STATE OF INDIANA

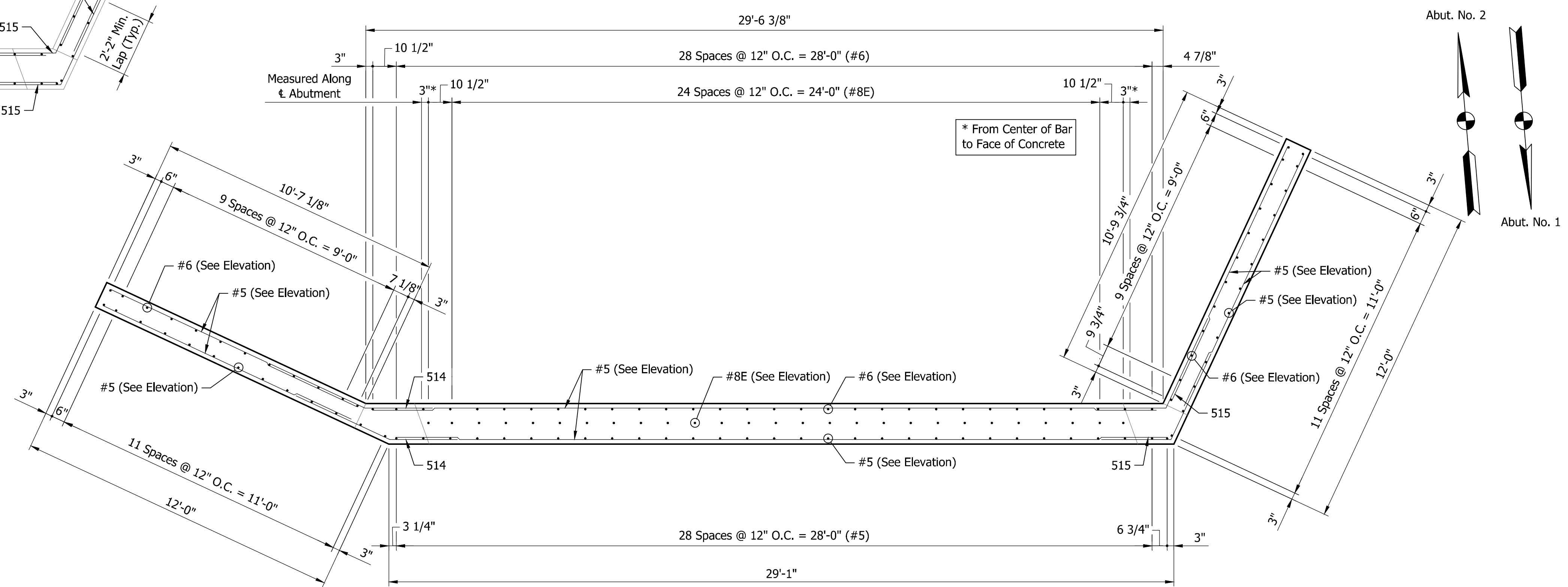
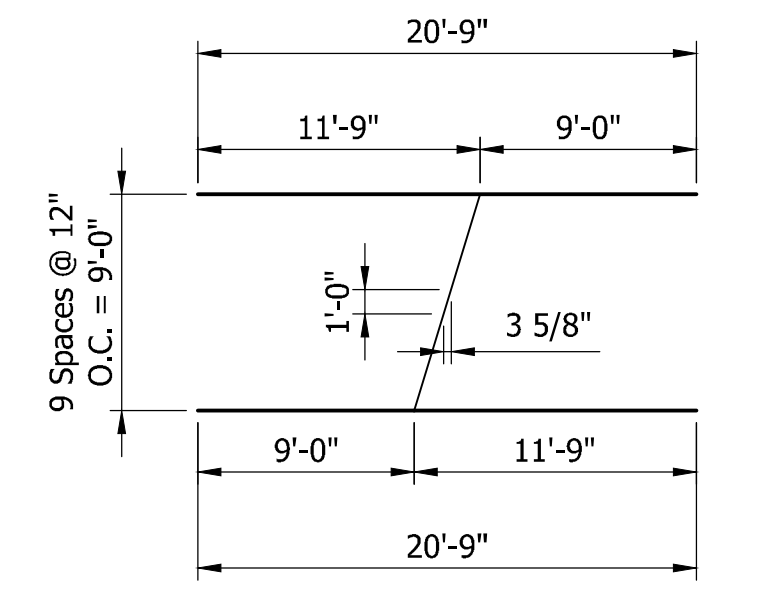
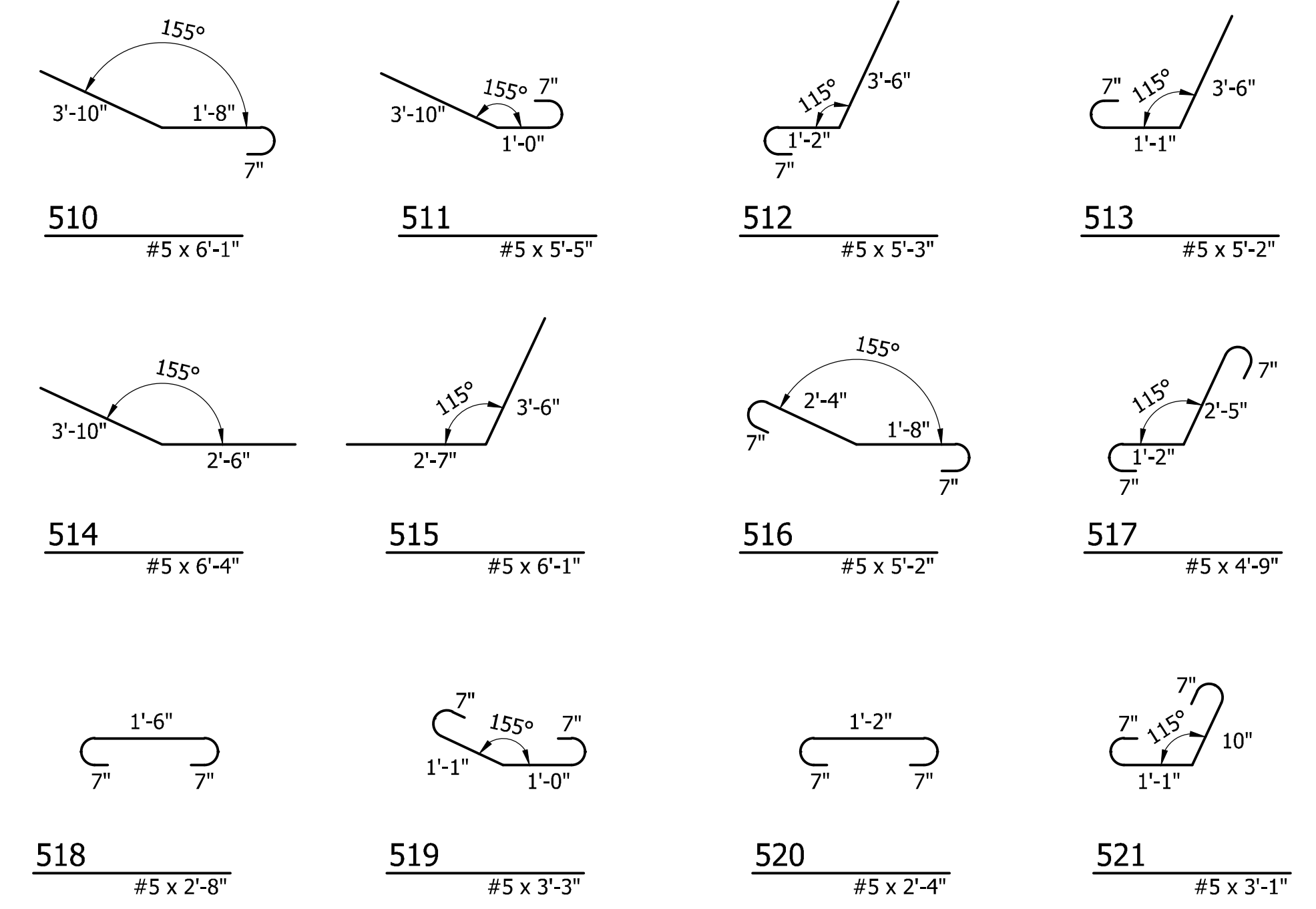
RECOMMENDED FOR APPROVAL
DESIGNED: KJH
CHECKED: JFW
DRAWN: RJA
CHECKED: JFW
DATE: 10/23/2020

FOUNDATION PLAN

SCALE AS NOTED
SHEETS 2 of 5
PROJECT

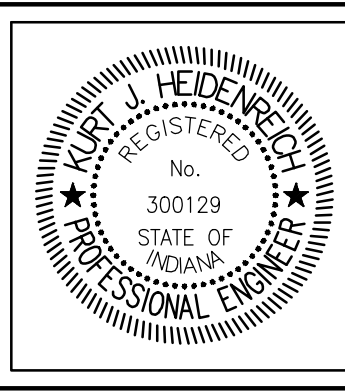


CORNER DETAILS
Scale: 3/8" = 1'-0"



BILL OF MATERIALS			
BOTH ABUTMENTS			
MARK OR SIZE	NO. REQ'D	LENGTH	WEIGHT
#8E	54	1'-6"	
Total #8 Epoxy Reinf. Bars			217#
Total Epoxy Reinf. Bars			217#
#6	20	20'-9"	
#6	10	12'-0"	
#6	54	10'-0"	
#6	4	8'-10"	
#6	2	4'-0"	
Total #6 Reinf. Bars			1,680#
510	2	6'-1"	
511	4	5'-5"	
512	2	5'-3"	
513	4	5'-2"	
514	40	6'-4"	
515	40	6'-1"	
516	2	5'-2"	
517	2	4'-9"	
518	2	2'-8"	
519	2	3'-3"	
520	2	2'-4"	
521	2	3'-1"	
#5	22	29'-1"	
#5	22	28'-7"	
#5	20	20'-9"	
#5	16	12'-0"	
#5	4	10'-10"	
#5	4	10'-7"	
#5	36	10'-4"	
#5	88	10'-0"	
#5	4	8'-10"	
#5	8	8'-8"	
#5	8	5'-5"	
Total #5 Reinf. Bars			4,137#
Total Reinf. Bars			5,817#
CONCRETE			
Concrete, Class A			52.3 CYS

ENGINEERING RESOURCES, INC.
Ph: (260) 490-1025
www.eri.consulting
11020 Diebold Rd.
Fort Wayne, Indiana 46845



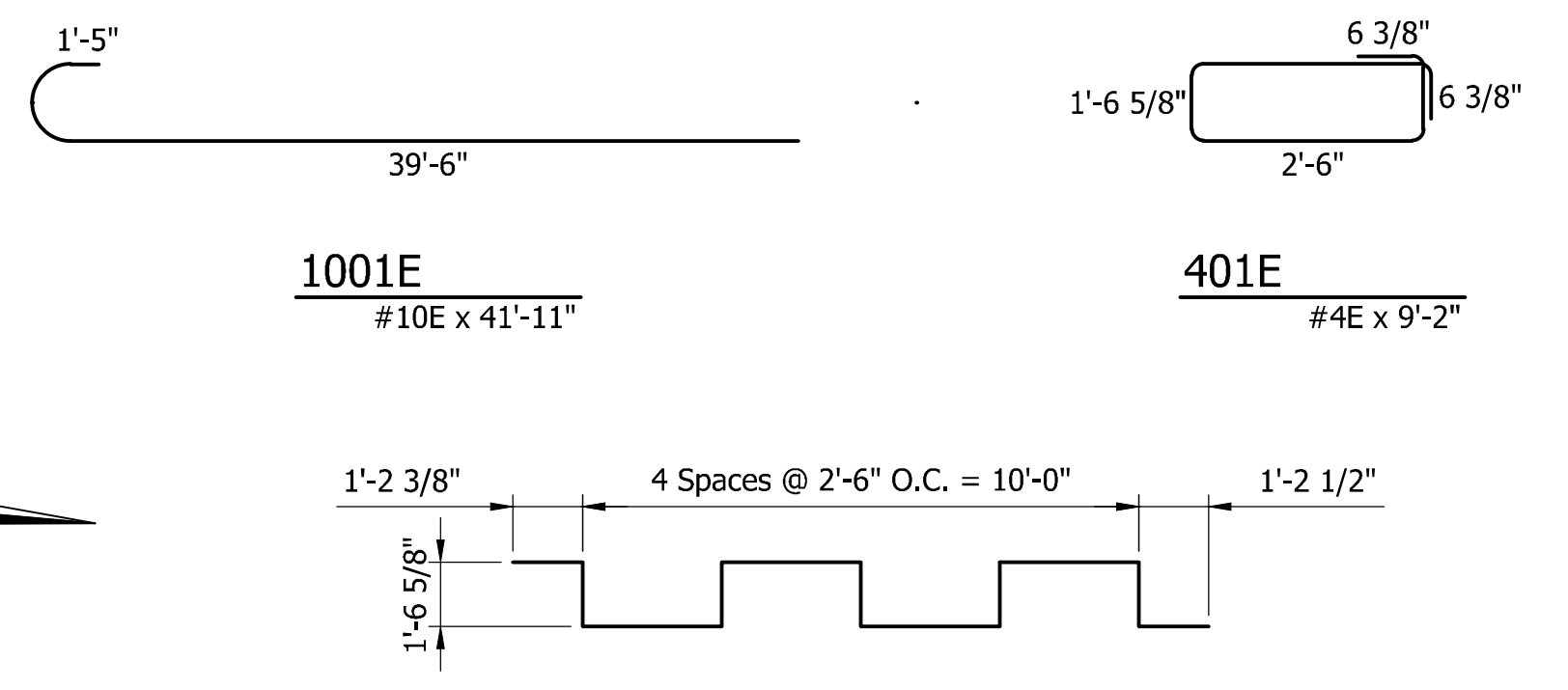
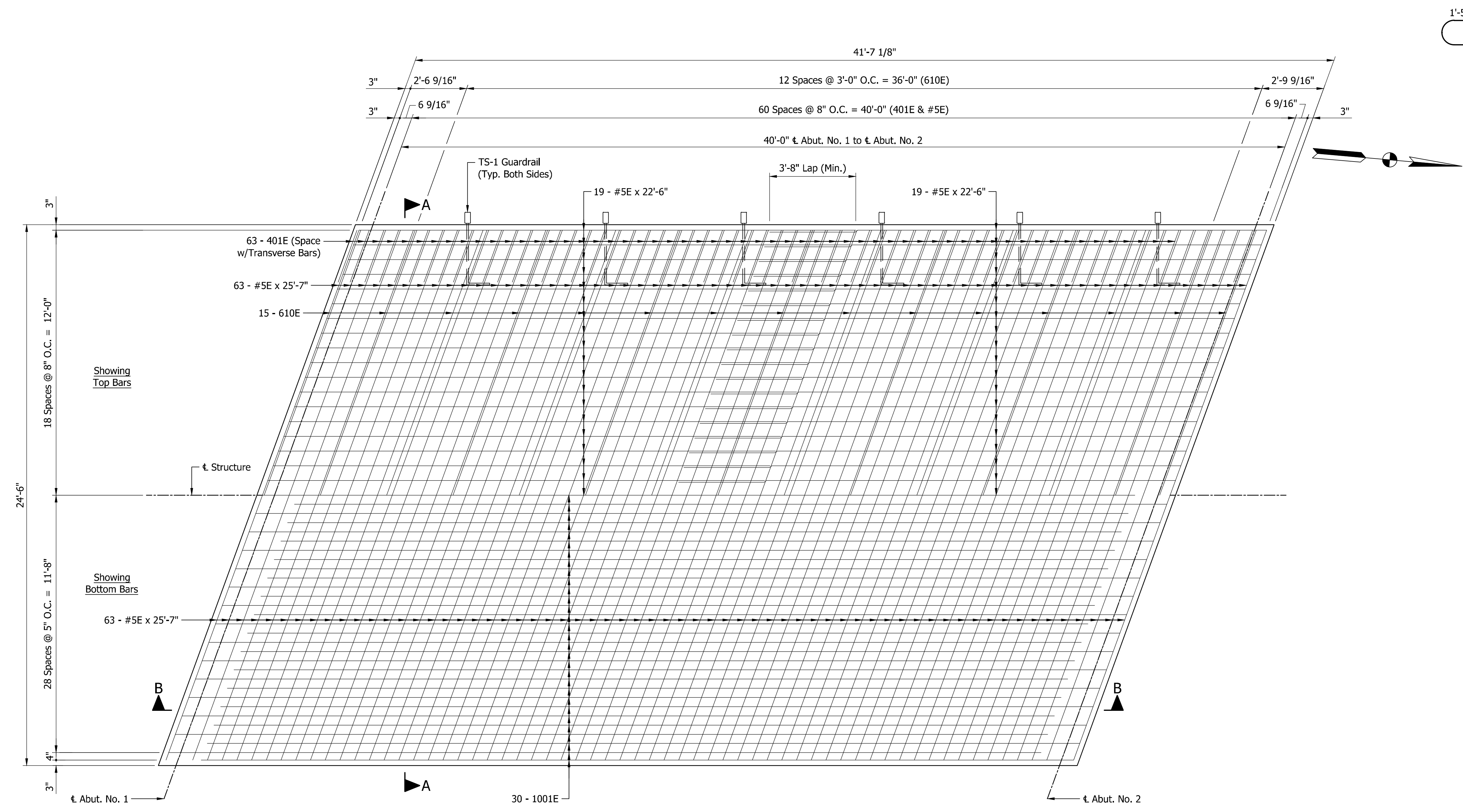
RECOMMENDED FOR APPROVAL
DESIGN ENGINEER
DATE: 10/23/2020

DESIGNED: KJH
DRAWN: RJA
CHECKED: TRL
CHECKED: TRL

ABUTMENT DETAILS

SCALE AS NOTED

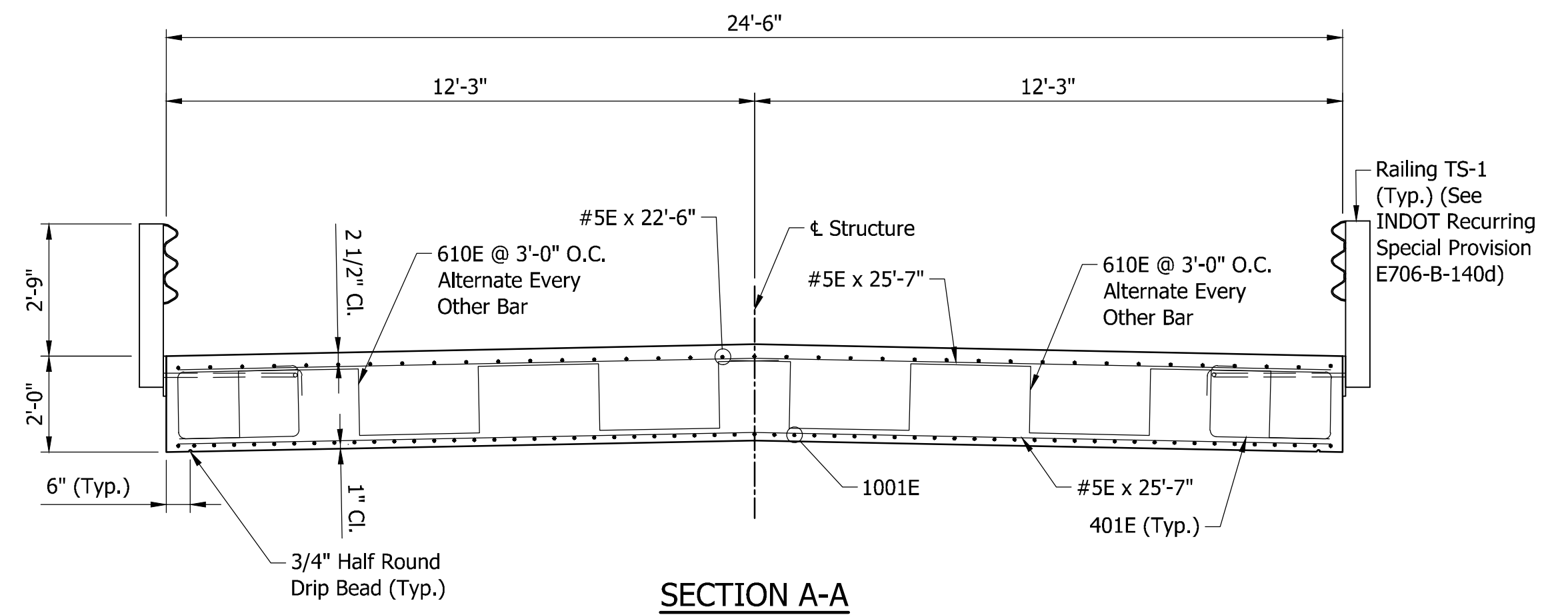
SHEETS 4 of 5 PROJECT



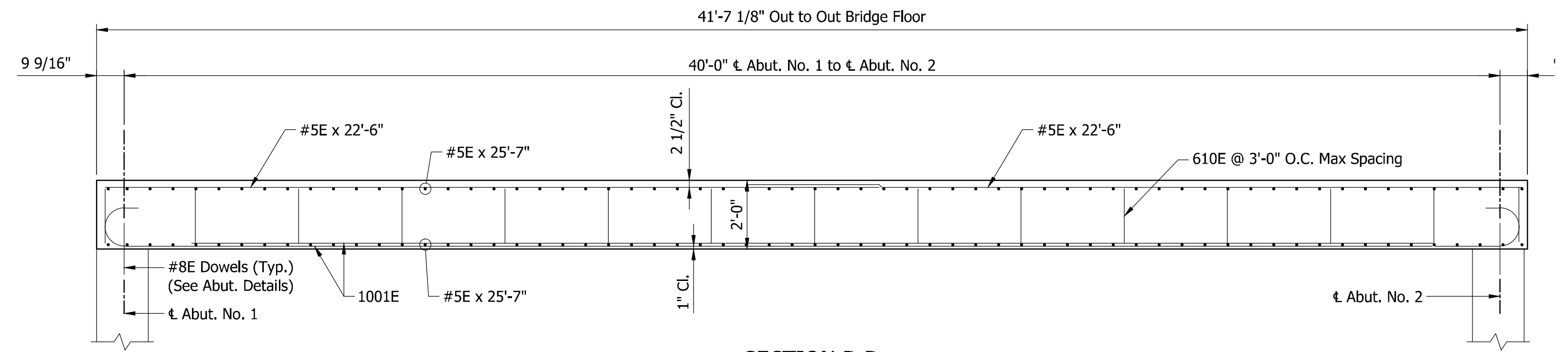
BAR BENDING DETAILS
Not to Scale

BILL OF MATERIALS			
SLAB			
MARK OR SIZE	NO. REQ'D	LENGTH	WEIGHT
1001E	59	41'-11"	
Total #10 Epoxy Coated Bars			10,642#
610E	30	20'-2"	
Total #6 Epoxy Coated Bars			909#
#5E	126	25'-7"	
#5E	74	22'-6"	
Total #5 Epoxy Coated Bars			5,099#
401	126	9'-2"	
Total #4 Epoxy Coated Bars			772#
Total Epoxy Coated Bars			17,422#
CONCRETE			
Concrete, Class C			75.5 CYS

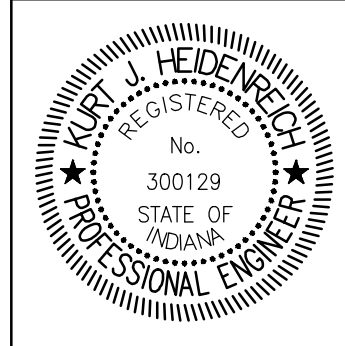
SLAB PLAN
Scale: 3/8" = 1'-0"



SECTION A-A
Scale: 3/8" = 1'-0"



SECTION B-B
Scale: 3/8" = 1'-0"



RECOMMENDED FOR APPROVAL	<i>K. J. Heidereich</i>	DESIGN ENGINEER	10/23/2020	DATE
DESIGNED: KJH	DRAWN: RJA			
CHECKED: TRL	CHECKED: TRL			

FLOOR DETAILS

SCALE	AS NOTED
SHEETS	5 of 5
PROJECT	